

Hardin County Farm Museum

203 N Washington Street

PO Box 41

Eldora, IA 50627

641.939.7107

2016 Spring Newsletter Volume 17, Issue 1

In This Issue:

- Notes from the Board
- Spotlight
- The Country Church
- Ragbrai Report
- A Year in Pictures
- Facts From Fifteen
- Can You Help?
- 2016 Schedule

2016 Board Members

President:

Jason Reinertson

Vice President:

Lonnie Balvanz

Secretary:

Richelle Stowe

Treasurer:

Marilyn Reinertson

Directors:

Edward Ziesman

David Higgason

Membership Dues:

\$20 per year

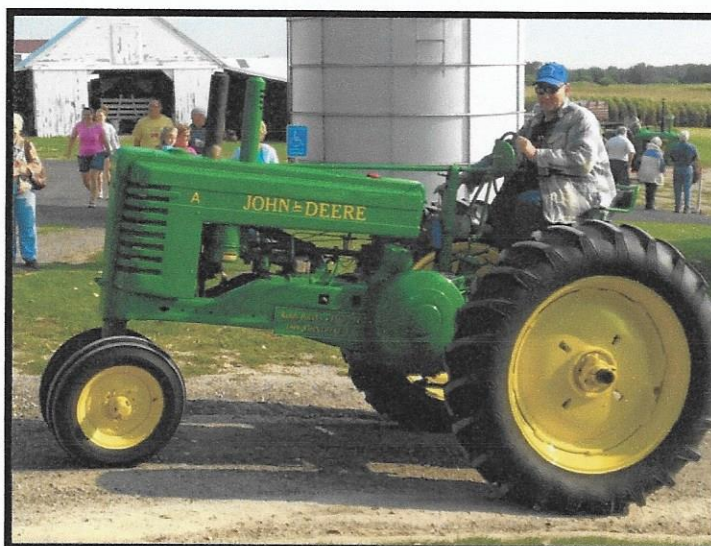
Notes From The Board

We have completed another successful year at the Hardin County Farm Museum. 2015's most notable achievements include moving the Ellis Church to the museum grounds, hosting a Ragbrai dinner and overnight, as well as serving six pancake breakfast fundraisers, sponsoring the Greenbelt Tractorcade, the Family Barn Dance, and two festivals showcasing farming techniques of yesteryear.

2016 looks to be another great year for us. We invite you to join us however you can, whether it be to attend an event, volunteer in some capacity, or a financial donation. We appreciate any support you can offer.

We extend a heartfelt Thank You to our Secretary/Treasurer from the inception of the museum, Darold Duerr, and Board Member Lloyd McDonald, as they retire from the Farm Museum Board. It is impossible to measure their service and without their dedicated guidance and leadership the Farm Museum would never have become what it is today. Thank you!

We also said goodbye to Randy Buckley, who passed away in January. Buck was instrumental in preparing the Ellis Church for its move. He also spent countless hours at the Museum, mowing, repairing, building, serving pancakes, in the Tractorcade, and at the festivals. Buck's willingness to help with any project and his genuine enthusiasm will be greatly missed.



IN
MEMORY
OF
RANDY
BUCKLEY



Hardin County Fair Parade – Ed Ziesman



Fall Harvest Festival – Miss Eldora Emily Mitchell



Wagon Rides – George Brandt



Threshing Festival



Fall Harvest Festival – Corn Shelling



Petting Barn – Landry Steding

During 2015:

Facts From Fifteen

- Volunteers served six pancake breakfasts to 845 guests.
- Two festival dinners were served to 260 guests.
- We hosted 250 campers and fed over 400 during RAGBRAI
- The Greenbelt Tractorcade had 36 tractor drivers/riders.
- Around 40 dancers danced the night away at the Family Barn Dance.
- The Museum was a stop on a tour of the Iowa Barn Foundation members
- The barn was rented out for family reunions, 4-H meetings, graduation receptions, wedding rehearsal dinners and customer appreciation dinners.

Thank You Thank You Thank You

Breakfast & Festival Volunteers:

Board of Directors: Ed, Jason, Buck, Richelle, Lonnie,
Lloyd, Dave, and Darold

Reinertson, Ziesman and Stowe Family Members

George Brandt Shorty Reinertson Paulette McGreer

Gene Foster Larry Balvanz Lisa Lawler

Becky Rose Marvin Granzow Jordyn Daggs-Olson

Mike May Sr and family (rope making)

Collins and Steding Families (petting barn)

Pat Ziesman (outside kid's activities)

Allison Stowe & Emily Mitchell (schoolhouse)

Threshing Helpers, Harvest Helpers, Pie Bakers

Everyone who helped make 2015 a successful year.

Can you help?

The HCFM is run 100% by volunteers like you.

We are in need of volunteers on our Board of Directors.

We are in need of volunteers at our pancake breakfasts.

We are in need of volunteers at our Threshing Festival.

We are in need of volunteers at our Harvest Festival.

We are in need of pie makers for our Festivals.

We are in need of help with activities during Festivals.

We are in need of volunteers to help us with building repair projects, cement work, painting, and repair work.

We are in need of your financial support.

If you can help us in any way, please contact

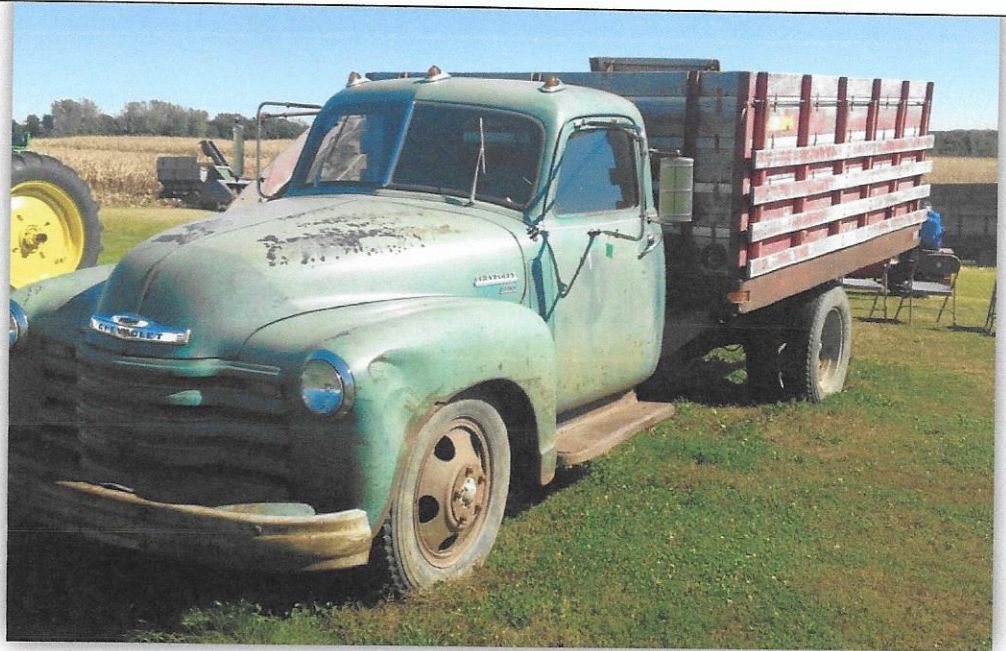
any Board Member or email Richelle at

crarastowe@heartofiowa.net. Thank you!

SPOTLIGHT

1950 4400 Chevrolet Grain Truck

Be sure to check out this hard working piece of agricultural history donated by Raymond Stockdale of Iowa Falls. This work horse was purchased brand new in 1950 by Raymond's father, Thomas Stockdale, who farmed his entire life on the family farm east of Iowa Falls where Raymond now lives. The Stockdale farm consisted of 160 acres of corn, soybeans, alfalfa, cattle and sheep. The Stockdales used the truck to haul grain to the Macy Elevator and the Iowa Falls Elevator and made many trips to the sale barn in Colfax with loads of livestock.



Thomas purchased this truck from salesman Marian Shane who worked at the Iowa Falls dealership that also sold Minneapolis Moline tractors. Raymond still has the Minneapolis Moline Z that his father purchased from the same salesman.

The 1950 4400 Chevrolet Grain Truck came in two colors: blue and green. Thomas chose blue because he liked it better. In those days a radio in a work truck was considered frivolous, so Thomas chose not to have a radio installed. The first box on this truck didn't have a hoist, so any grain loaded into the box had to be unloaded by hand. In the 1960s Thomas drove the truck all the way to Des Moines to get the new box with a hoist. Raymond said unloading grain after that wasn't quite the chore it had been.

These were the days when neighbors would get together to shell corn. The farmer with the corn sheller would go from farm to farm to shell ear corn, Thomas would supply his truck to haul the shelled corn, and wagons were used to catch the cobs. One particular day, Thomas had the grain truck parked under the corn spout and the farmer backing up the wagon happened to back into the front right fender and left quite a dent. When Thomas turned the truck around to continue filling, the same guy backed up the wagon again and this time put a matching dent in the left front fender. The two original identical dents are still very visible!

When Raymond was a teenager, Thomas asked for his assistance in cleaning the grease off the engine. His father thought the caked on grease would probably come off easier with gasoline and a warmed engine. Unfortunately the engine caught fire and needless to say, Thomas and Raymond ended up replacing all the wiring.

The Stockdale's truck is on its third engine. The first engine gave out when they were hauling a load of sheep to the Colfax sale barn. A service station owner in Colo convinced them to put in an old engine he had. Raymond thinks it probably wasn't the correct sized engine for this truck as it didn't last very long. The third engine is the engine still in the truck today. Everything else on Stockdale's 1950 4400 Chevrolet Grain Truck is original.

This awesome piece of history was used by three generations of Stockdales when Raymond's son Kurtis helped on the farm as a teenager, and also when Raymond drove it in the Iowa Falls Homecoming Parade with son Kurtis and his friends in the box throwing out water balloons. Kurtis also used the truck to haul his furniture when he was moving.

Thank you to the Stockdale family for donating this truck to the Hardin County Farm Museum. Come out and see it!

TRIVIA QUESTION: What was the name of the farm implement dealer in Iowa Falls in 1950?

THE COUNTRY CHURCH HAS MOVED TO TOWN!

We are excited to have the Ellis Church Building as part of the Hardin County Farm Museum's growing historical collection and look forward to having it open to visitors later this year.



The Ellis Church was moved to its new home on the Hardin County Farm Museum Grounds on June 10th, 2015. After months of work preparing the structure and the new site for the move, waiting for the moving company and for the perfect moving conditions, the Church finally arrived safe and sound onto its new foundation.

The Church building is in need of repair work before it will be ready to open its doors. First and foremost is to repair the outside siding, bell tower, windows, and pour new cement steps and sidewalk. Next will be to repair the plaster walls and ceilings that are peeling due to age and cracked from the move, and then to install floor coverings as the floors had been stripped before the building was donated. Once the inside work is complete, the pews and furnishings will be added as well as display cases and shelving for historical displays.

Thank you to all our volunteers who helped prepare the church for its move, helped during the move and will continue to help as work progresses so that the church building can open its doors to visitors.

Thank you to everyone for your continued support financially, as the work continues.



HCFM Ragbrai Report July 21 2015

THANK YOU TO ALL OUR RAGBRAI VOLUNTEERS for everything you did to make the Farm Museum Ragbrai dinner a HUGE success! We served approximately 400 people and we told our Farm Museum story to people from all walks of life from 38 different states and 2 foreign countries in one day. Over 250 campers spent the night on the Museum grounds including 4 bike clubs and 2 family units.

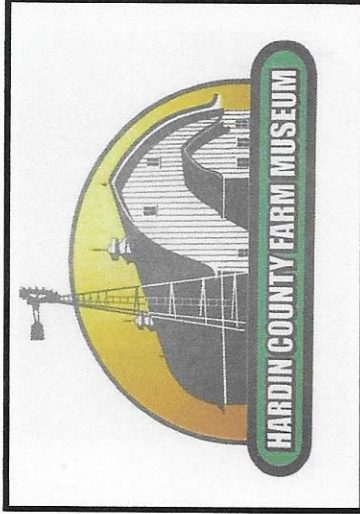
A HUGE THANK YOU to Ed Ziesman, George Brandt and Randy Buckley for having the Museum grounds looking absolutely awesome! Countless compliments were received about how beautiful our grounds looked and what a peaceful night sleep they had.

RAGBRAI Volunteers: We had help setting up the grounds, preparing & serving food, homemade pie and cookie makers, outside helpers, money takers, information givers and clean up & tear down crew. With such great volunteers, we are happy to report the event went off without a hitch.

Our list of volunteers includes:

Ed Ziesman	Jason Reinertson	Janelle Stowe	Lloyd McDonald	Morgan Reinertson	Shila Stowe
George Brandt	Ione Ziesman	Allison Stowe	Andrea Brown	Samantha Reinertson	Charlotte Cook
Randy Buckley	Brenda Glaser	Natalie Stowe	Les Clampitt	Staci Reifschneider	Marlys Fisher
Michael Glaser	Richelle Stowe	Rebecca Cook	Kay Clampitt	Nan Schwartz	Cynthia Ziesman
Hunter Welch	Lynnette Minter	Carole Damon	Lisa Lawler	Polly Roll	FFA Members: Emily, Josh,
Andrew Stowe	Bob Busch	Jacque Daggs	Beverly Daggs	Becky Rose	McKenzie, Megan, Michaela,
Alex Stowe	Beth Busch	Jennifer Mitchell	Ardis Caster	Linda Pierson	Levi and Mr Pfantz, Advisor
Craig Stowe	Pat Ziesman	Megan Mitchell	Shirley Landt	Lonnie Balvanz	

Tent – Kevin Hackney; Ranger – Eric Duncan; Wildflowers – Jerry and Linda McCoy; Photographer – Don DeNeui; Water Tanks and Homemade Ice – Roger Ziesman; Thank you to Leona Vigars, Ray Schult, John Dennis, Ed Ziesman, and Brian Hobson for allowing us to put signs in their yards to advertise our meal. And thank you to anyone who helped who we omitted. We appreciated all of you!



HARDIN COUNTY FARM MUSEUM

203 N Washington Street

PO Box 41

Eldora, IA 50627

641.939.7107

Directions: One Mile North of the Stoplight in Eldora

Farm Museum Schedule of Events - 2016 - Everyone Welcome

Date	Time	Event	Charge
4/2/2016	7:00 - 9:30 AM	Pancake Breakfast	Freewill Donation
5/7/2016	7:00 - 9:30 AM	Pancake Breakfast	Freewill Donation
6/4/2016	7:00 - 9:30 AM	Pancake Breakfast	Freewill Donation
7/2/2016	7:00 - 9:30 AM	Pancake Breakfast	Freewill Donation
7/23/2016	7:00 - 9:30 AM	Pancake Breakfast Pine Lake Festival	Freewill Donation
8/6/2016	10:00 AM- 2:00 PM Lunch Served after 11:00	Threshing Day	Food Charge
8/20/2016	7:00 - 9:30 PM Tractors leave at 9:00 AM	Pancake Breakfast Greenbelt Tractorcade	Freewill Donation Fee for Tractorcade
9/3/2016	7:00 - 9:30 AM	Pancake Breakfast	Freewill Donation
10/1/2016	10:00 AM- 2:00 PM Lunch Served after 11:00	Fall Harvest Festival	Food Charge
10/8/2016	7:00 - 10:30 PM Supper served after 6:00 PM	Family Barn Dance	Ticket Charge Food Charge